

# SNO-KING RETIRED TEACHERS ASSOCIATION

# BULLETIN

OCTOBER 1990

## PRESIDENT'S MESSAGE

October is here! The time of pumpkins, goblins and politicians. Pumpkins are for carving, for pie filling and eating. Goblins are those who entreat at our door steps for goodies and such. Politicians often offer the treat which should be examined thoroughly before partaking thereof.

Come to our scholarship luncheon at the Edmonds Unitarian Church. Some of our politicians may be there. Those who survived the primaries in the 1st, 21st and 44th districts have been invited to attend the luncheon and to be available to express their views on the issues that concern us - COLA's, medical, etc. Be sure to join us - bring a friend. The new retiree down the block would be a great one to bring. See you there!

John Hunter, President



### COMING EVENTS

- October 10 Board Meeting - 1:30 p.m. at Betty Odle's 2137 N 86th, 525-8276
- October 18 NOON Scholarship Luncheon at Edmonds Unitarian Church-8109-224th SW, Edmonds.
- November 14 Board Meeting - 1:30 p.m. at Ed Osborn's, 2110 N 171st, Seattle, 364-3523.
- November 15 Regular meeting in Edmonds School District Board Room, 3800 196th St SW, Lynnwood.

### SCHOLARSHIP LUNCHEON

It's time to put this special date on your October calendar - October 18 at the Edmonds Unitarian Church, 8109 224th SW, Edmonds, WA. The Scholarship Luncheon will be at noon with delicious hot dishes and salads to tempt you.

This is a great opportunity to swell our scholarship funds so we will be able to give more money to our three scholarship winners.

If you were unable to sign up for food contributions at the last meeting, please contact Betty Odle, 525-8276 or Cheryl Bickford, 363-2731. Call them also, if you plan to attend, as we need to know the approximate number that will be attending.

### SNO-KING RETIRED TEACHERS' SCHOLARSHIP FUND

The purpose of the Sno-King Retired Teachers' Scholarship Fund is to assist carefully selected graduating Seniors from Edmonds, Northshore, or Shoreline School Districts majoring in education reach their goals.

Contributions are tax deductible.

Enclosed is a contribution of \$ \_\_\_\_\_

As a special gift \_\_\_\_\_

Or in memory of \_\_\_\_\_

Or in honor of \_\_\_\_\_

on the occasion of \_\_\_\_\_

Please send acknowledgment to:

Name \_\_\_\_\_

Address \_\_\_\_\_

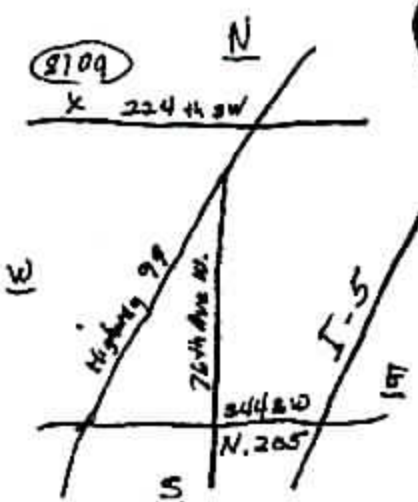
Donor's name \_\_\_\_\_

Address \_\_\_\_\_

(Make check payable to Sno-King Retired Teachers' Scholarship Fund. Mail to: Sno-King Retired Teachers Association P.O. Box 5253 Lynnwood, WA 98046-5253

Invite your friends, too, and donate \$4.00 to the Scholarship Fund. See you there! Deadline for reservations - October 15.

We are enclosing a Scholarship Fund donation slip for your convenience if you wish to make a contribution as a special gift, or in memory or in honor of someone. If you are unable to attend the luncheon you may wish to send in your contribution, anyway.





NEWS ABOUT OUR MEMBERS

Mary Lamb is off on a trip to Europe - visiting Germany, Switzerland and Austria. Marion Ballows had a reunion with her Scandinavian tour members up on Whidbey Island. Had great fun seeing everyone again. Mary Lou Porter is on her way to Mexico and will take the famous train trip through Copper Canyon. After gardening, company, and enjoying the local sites, like Bloedel Reserve on the peninsula, I am back doing my business - Images+ - wardrobing, accessorizing with scarfs, belts, pins, etc. Come to my showroom or call for a brief consultation. I can save you money. Mary Ann Simons, 775-4004. Helen Beaver had a great visit to Germany this summer. Millie Carlson had a wonderful trip to the Scandinavian countries.



DUES WERE DUE JULY 1 IF YOU ARE NOT ON AUTOMATIC DUES DEDUCTION. You can use the forms below for either CASH or ADD. Use form A for CASH and BOTH FORMS FOR ADD. Send Forms to our Treasurer, Ed Osborn, Sno-King RTA, P.O. Box 5253, Lynnwood, WA 98046-5253.

(A) CASH THIS FORM TO BE RETAINED BY UNIT TREASURER WASHINGTON STATE RETIRED TEACHERS ASSOCIATION Local Unit No. 23 Name Phone Address (Summer) Address (Winter) Retirement Number Social Security Number Legislative District Name of Local Unit MEMBERSHIP PLAN: Signature I am on the Dues Deduction Plan (check) State & Local State Only I pay yearly; (check) State Dues ( ) \$24 Local Dues ( ) \$6 Assoc. Dues (Spouse) ( ) \$2 Assoc. Dues (Active Teacher) ( ) \$3.00

(B) DUES DEDUCTION AUTHORIZATION FORM Return this portion to: WASHINGTON STATE RETIRED TEACHERS ASSOCIATION 1501 South Capitol Way, Suite 103, Olympia, WA 98501 Local Unit No. 23 Name (print or type) Address Retirement Number Social Security Number Legislative District Name of Local Unit I authorize the Washington Teachers' Retirement System to deduct the following dues from my monthly retirement allowance and to pay such deduction to the Washington State Retired Teachers Association. I agree to keep this deduction in force for the full membership year (July 1 through June 30). Should I wish to cancel ensuing deductions I will send a written notification of cancellation to WSRTA prior to May 1 to be effective July 1. (Please check) State ( ) \$24 Local ( ) \$6 Total per month Date Signature