



OCTOBER 1984

PRESIDENT'S MESSAGE - Betty Odle

What a beautiful Indian Summer we are enjoying! We are looking forward to it continuing for several more weeks, and are hoping for lovely weather for our Fall Scholarship Luncheon Meeting on October 18 - details are included in the newsletter. We hope that you will come and bring your friends for the more people we have at the luncheon, the more money we will have for our scholarship fund.

We are very happy to welcome our new members; James Becker, Marion Bellows, Jean Culver, Kenneth Davis, Phyllis Fiege, Jeanne Heyrend, Betty Ketcham, Eugene Marshall, Barbara Rae Norman, Larry Peterson, Henrietta Swanson and Donis Welch, and also our new Associate Members; Nels Brannstrom, Mrs. John Kochniak, and Marjorie Olmsted. We are looking forward to meeting you and seeing you at our meetings.

Ken Angell, our Membership Chairman reports that about 100 of our members have not yet sent in their membership dues for our Local and State. I know that it is very easy to forget to pay dues when you belong to a number of associations. Your support is vital, however, as we work to improve, or at least save our retirement funds. Without our "watchdogs" down at the Legislature the funds in OUR retirement fund would be used to finance other areas. Please help to protect your interests by supporting your local unit and the state association.

Many of you, I am sure, would enjoy taking an active part in Sno-King and the officers and committee chairmen would be thrilled to have you join us, not only for our monthly meetings but in our committee work and volunteer work as well. I am asking that our committee chairmen make a very short summary of their work and needs at the next meeting and then meet for a few minutes after the meeting with the members who would like to work with their committee. We hope that each of them will be overwhelmed with your response.

See you on October 18th at noon at the Edmonds Unitarian Church!

VOLUNTEERS NEEDED FOR OUR SCHOOL PROGRAMS

Quite a number of our members have volunteered in the past to help with the Edmonds Kindergarten testing and tutoring and to read to elementary school classes in Shoreline. These programs will be operating again this year and we need your help. It can be for just a couple of hours, or for an hour once a week, or twice a month, or whatever time you can give. You'll enjoy it as much as the children do! Call Fran Jackson, 364-2583 for more information and to offer your help.

CALENDAR OF EVENTS

- October 10 Wed. Board Meeting - Walt Dawson's 1:30 p.m.
- October 18 Thurs. Scholarship Luncheon Meeting, Noon, Edmonds Unitarian Church
- November 7 Wed. Board Meeting - June and Gordon Roberts 1:30 p.m.
- November 15 Thurs. Regular Meeting - 1:30 p.m. Edmonds School Dist. Board Room.

NOTE: ANY ARTICLES OR NEWS FOR THE NEWSLETTER FOR NOVEMBER NEEDS TO BE TO BETTY ODLE BY OCTOBER 25TH. We would like to include news about what our members are doing - trips, special activities, etc., so call or write to Betty, 525-8276, 2137 N. 86th Seattle 98103.

### SCHOLARSHIP SALAD LUNCHEON

Our next meeting, on October 18, will begin at 12 noon at the Edmonds Unitarian Church, 8109 224th SW, Edmonds. For a \$3 donation you will enjoy a delicious luncheon in the company of good friends while contributing to our scholarship fund.

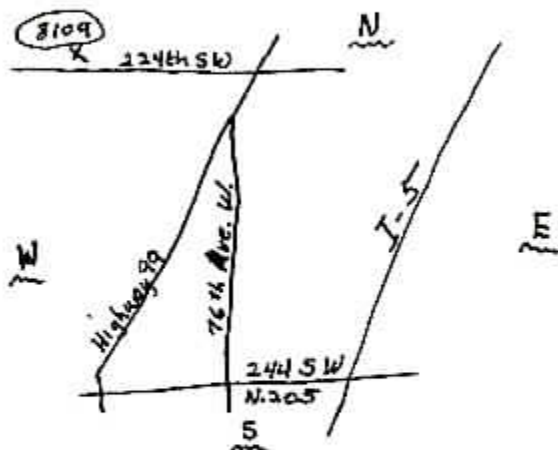
Bring a neighbor, a relative, friends, to help our fund grow. Where else can you take someone to lunch for only \$3?

The program is of timely interest to all. South Snohomish County League of Women Voters will have two speakers presenting both sides of the state and local issues which will be on the November ballot. There will be time for questions.

A drawing will be held at the November meeting for the beautiful \$90 Aran-Isle sweater which Helen Beaver has knit and donated to the scholarship fund. Tickets are 50¢ each or 3 for \$1, available at the luncheon. Each \$5 donation to the Scholarship Fund made between now and the drawing will receive 15 chances on the sweater. Get an early start on your Christmas shopping, or keep the sweater for yourself.

We need to know an approximate number attending the luncheon in order to have plenty to eat, so if you did not sign up at the last meeting please call June Roberts, 546-4284; Betty Odle, 525-8276; or Betty Puckett, 522-8921 by Monday, October 15. If you did donate a salad for the June Luncheon and would like to do so for this one, please call June or one of the Bettys.

The church is easy to find. It is several blocks west of Highway 99, quite far back from the street on the north side of 224th.



#### SNO-KING RETIRED TEACHERS' SCHOLARSHIP FUND

The purpose of the Sno-King Retired Teachers Scholarship Fund is to assist carefully selected graduating Seniors from Edmonds, Northshore, or Shoreline School Districts majoring in education reach their goals.

Contributions are tax deductible.

Enclosed is a contribution of \$ \_\_\_\_\_

As a special gift \_\_\_\_\_

Or in memory of \_\_\_\_\_

Or in honor of \_\_\_\_\_

on the occasion of \_\_\_\_\_

Please send acknowledgment to:

Name \_\_\_\_\_

Address \_\_\_\_\_

Donor's name \_\_\_\_\_

Address \_\_\_\_\_

(Make Check payable to Sno-King Retired Teachers Scholarship Fund. Mail to:  
Sno-King Retired Teachers Association  
P.O. Box 5253  
Lynnwood, WA 98046

SnoKing Retired  
Teachers' Assn.  
P.O. Box 5253  
Lynnwood, WA  
98036 0878

NON-PROFIT ORG.  
U.S. POSTAGE  
PAID  
LYNNWOOD, WA.  
PERMIT #277